



Technology From another World

ALIEN **WARP<sup>∞</sup>** HELP FILES

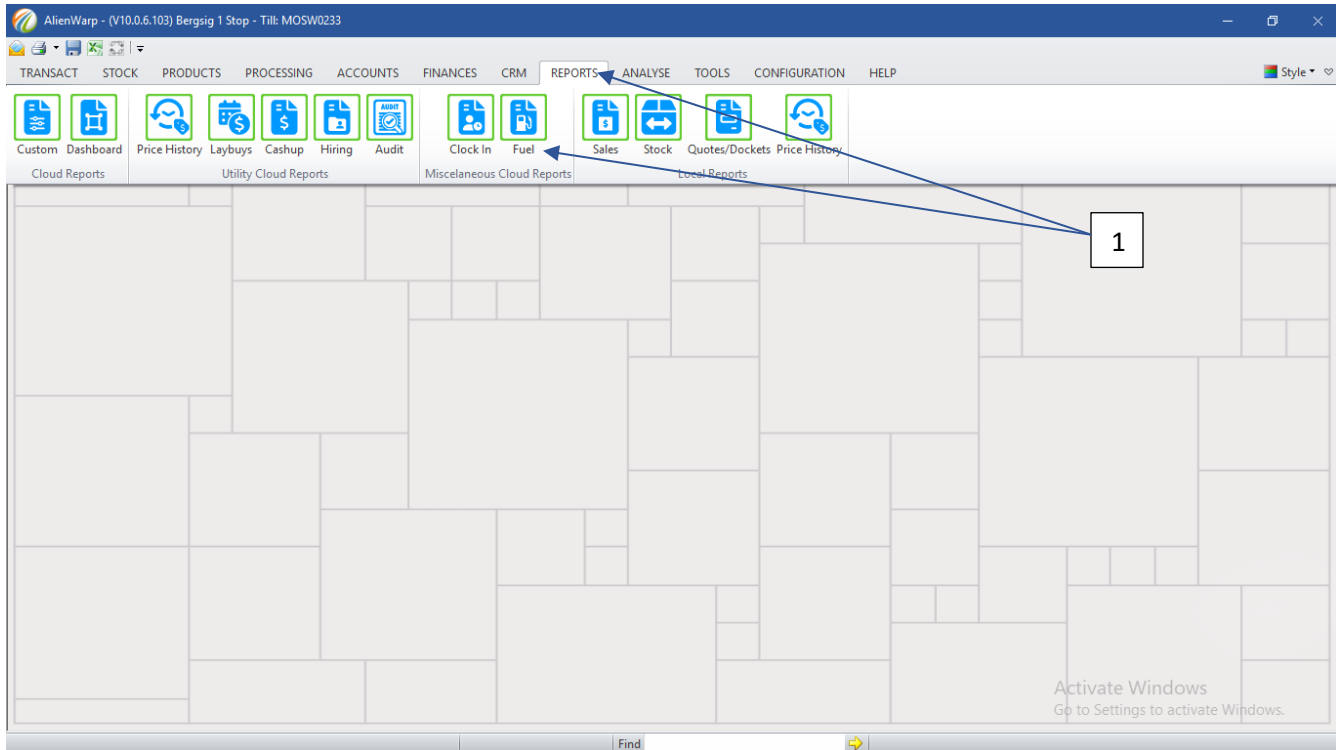


REPORTS - FUEL

## How to Get Fuel Reports

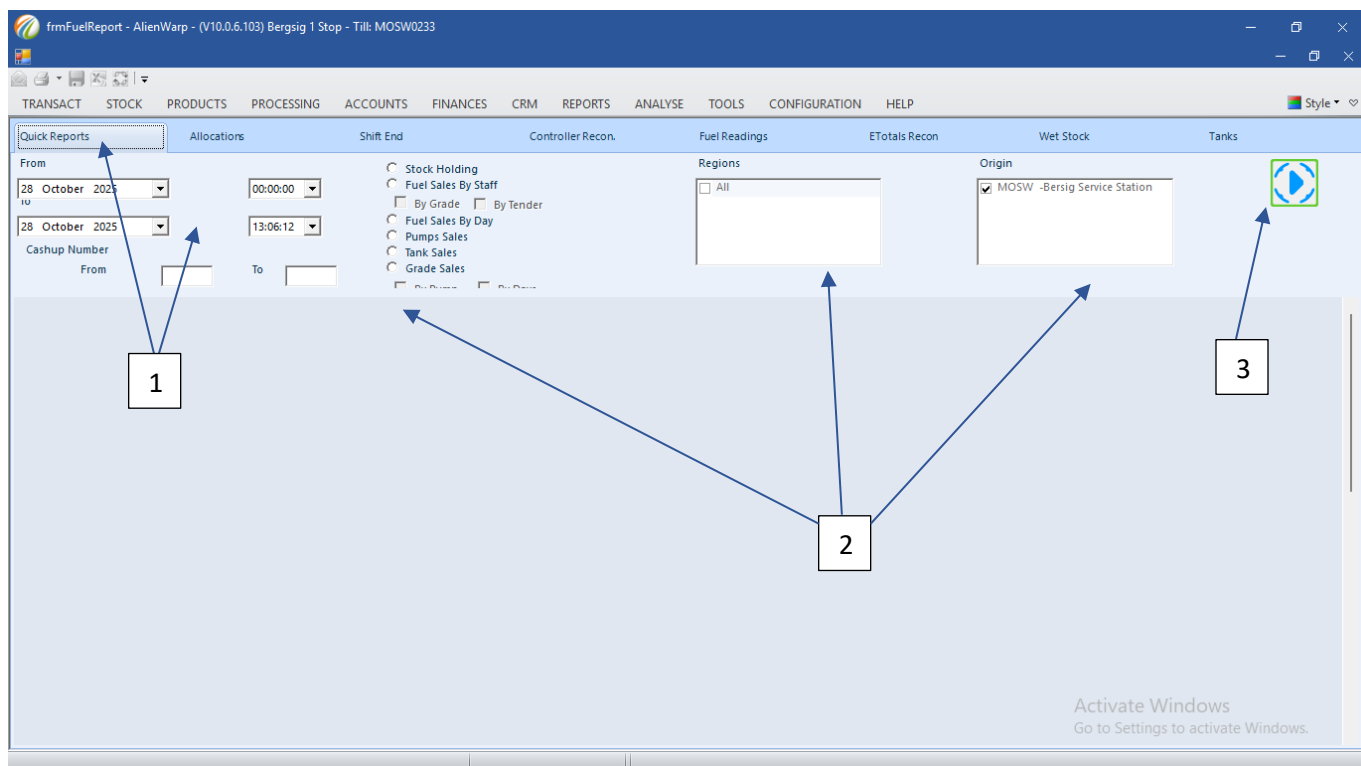
1. Quick Reports
2. Allocations
3. Shift End
4. Controller Recon.
5. Fuel Readings
6. eTotal Recon.
7. Wet Stock
8. Tanks

1.) Click on the reports button and then click on the fuel tab miscellaneous field.



## 1. How to populate quick Fuel reports

- 1.) For quick reports select the date range, or enter the cash-up numbers.
- 2.) Select the criteria you want to include in the report, the region, and the origin.
- 3.) Click the run button to populate the report.



The criteria issue the found information to collect on data that comprehensively contributes to the technological development in business, the selection can automate certain processes and deliver calculated information accordingly.

#### Stock Holding:

The stock holding will issue the stock on hand.

#### Fuel Sales by Staff:

These reports will issue the data used to evaluate performance and contribute to staff management, the issued data can be divided by grade and by tender.

#### Fuel Sales by day:

Fuel sales by day will collect the data of a single site or entire network.

#### Pump Sales:

The pump sales of every pump, from time to time, the selection will issue the statement of every individual pump that contributes to calculating the flow of service in the four-court area.

#### Tag Sales:

Tag sales allocated to staff will calculate the sales rendered with that specific tag, the selection equals the total of the tag even with more than one staff member using the tag.

## Grade Sales:

The grade will become the totals issued to determine the effectivity of the sales per grade, you can issue the data by pump, or by days to extract selected data.

## 2. How to populate allocations' reports

- 4.) For allocation reports, select the start and end date range.
- 5.) Select the criteria and select the origin you want to populate the report for.
- 6.) Click the run button to populate the report.

The screenshot displays the 'frmFuelReport - AlienWarp' application window. The title bar indicates the version is (V10.0.6.103) and the user is 'Bergsig 1 Stop' with title 'MOSW0233'. The menu bar includes TRANSACT, STOCK, PRODUCTS, PROCESSING, ACCOUNTS, FINANCES, CRM, REPORTS, ANALYSE, TOOLS, CONFIGURATION, and HELP. Below the menu is a toolbar with icons for various reports: Custom, Dashboard, Price History, Laybuis, Cashup, Hiring, Audit, Clock In, Fuel, Sales, Stock, Quotes/Dockets, and Price History. The main window has a tabbed interface with 'Quick Reports' selected. Under 'Quick Reports', the 'Allocations' tab is active. The 'Allocations' tab contains several input fields and checkboxes. The 'Start Date From' field is set to '28 October 2025' and the 'To End Date' field is set to '27 December 2025'. The 'Show incomplete' checkbox is checked, while 'Show completed' and 'Show cancelled' are unchecked. The 'Chain' field is set to 'MOSW -Bersig Service Stati'. The 'Client' and 'Routes' fields are empty. The 'Origin' field is set to 'MOSW -Bersig Service Stati'. Three blue arrows point to specific fields: arrow 2 points to the 'Start Date From' field, arrow 3 points to the 'Show incomplete' checkbox, and arrow 4 points to the 'Chain' field. The bottom of the window shows a status bar with a 'Find' button and a yellow arrow icon. An 'Activate Windows' watermark is visible in the bottom right corner.

### Show incomplete:

Incomplete fuel stock allocations not completed (dispensed) to sub-accounts (vehicles).

### Show completed:

Completed indicates the fuel allocated to sub-accounts (vehicles) successfully.

### Show cancelled:

Cancelled orders can contribute to understanding the issues of operation and how to resolve them.

## 3. Shift End

- 7.) For shift end report select the day and shift time, or, enter the cash-up number in the to and from data entry windows.
- 8.) Select the region and location.
- 9.) Click the run button to populate your report.

frmFuelReport - AlienWarp - (V10.0.6.103) Bersig 1 Stop - Till MOSW0233

TRANSACTION STOCK PRODUCTS PROCESSING ACCOUNTS FINANCES CRM REPORTS ANALYSE TOOLS CONFIGURATION HELP

Orders Receive Transfer Stocktake Stock Levels Movement Stock Recon Dispatch Routes Accept

Receive & Transfer Stock Manage Stock Logistics Tools

Quick Reports Allocations **Shift End** Controller Recon. Fuel Readings ETotals Recon Wet Stock Tanks

Day: 27 November 2025 Shift time: 7:00 AM Till#: 1 OR Cashup Number: From To

Region: All Location: MOSW -Bersig Service Station

1 2 3

Activate Windows  
Go to Settings to activate Windows.

#### 4. Controller Recon.

- 10.) For controller recon reports select the from and to date range and times.
- 11.) Select the criteria and select the locations you want to include in the report.
- 12.) Click the run button to populate the report.

#### Manual Sales:

Manual sales occur when there is poor or no connectivity to report on the data captured during this period.

#### Mismatches:

Includes Manual and live transmission of fuel pump readings to evaluate the total readings of the pump, grade, or hose.

#### All Tills:

Populate fuel reading reporting on all tills connected to various pumps.

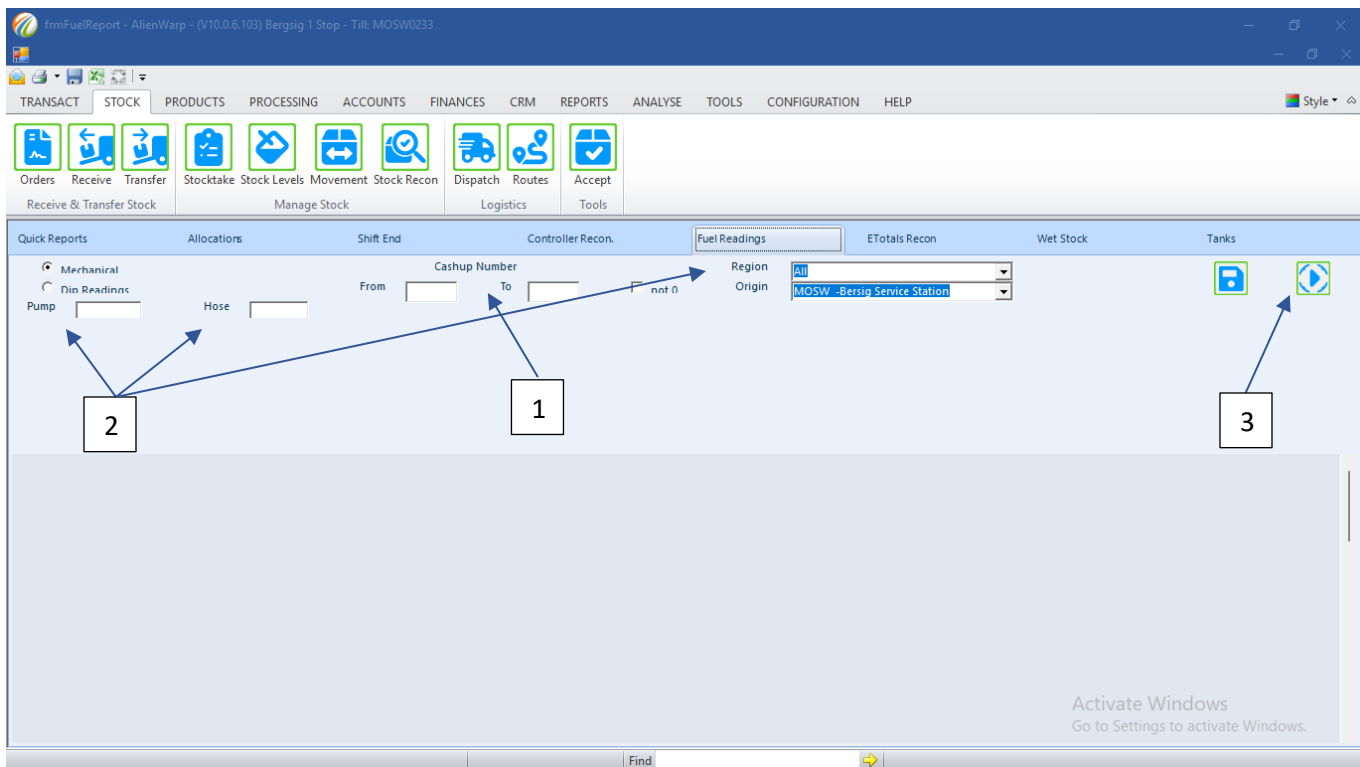
Enter the grade, pump identification, hose identification, cash-up number, invoice number, and delivery identification to display on the report.

## 5. Fuel Readings

13.) For fuel reading reports, enter the from and to cash up numbers.

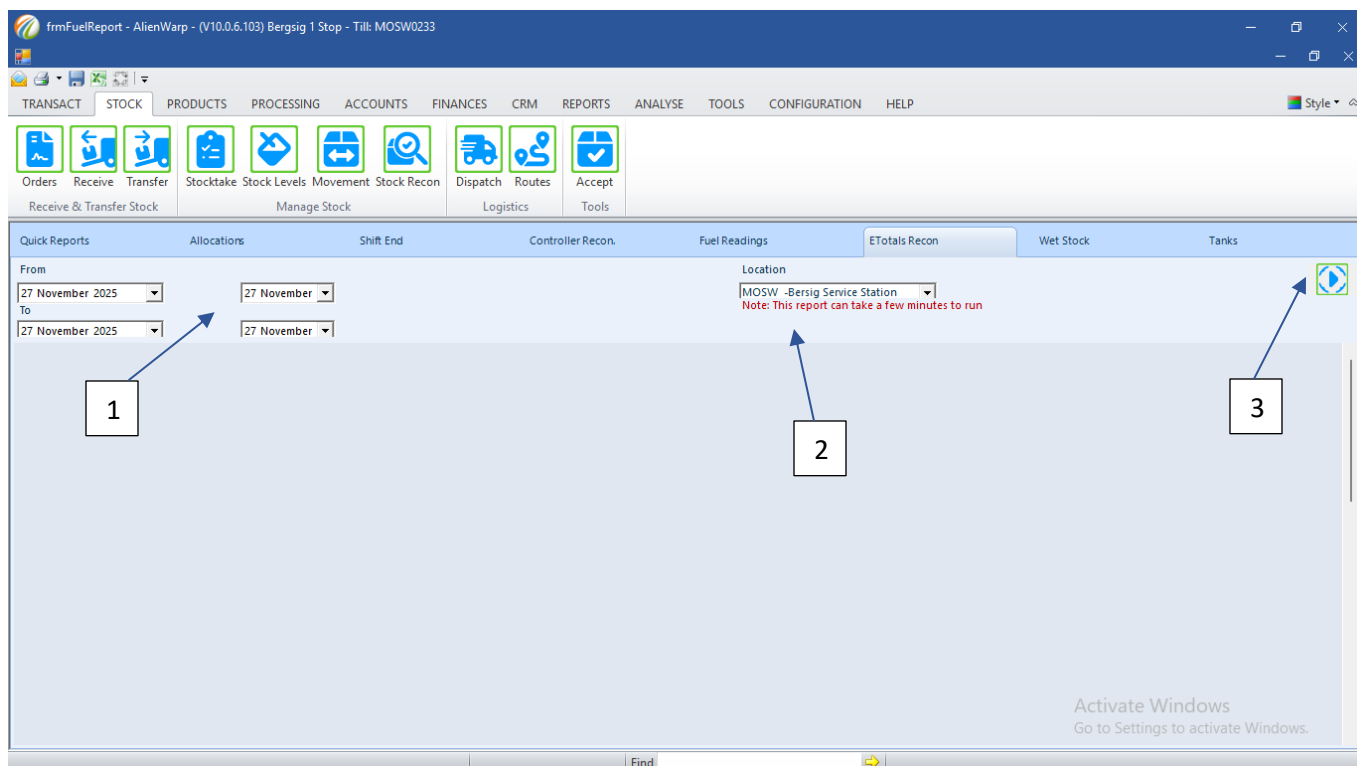
14.) Select the criteria and enter the location and origin.

15.) Click the run button to populate the report.



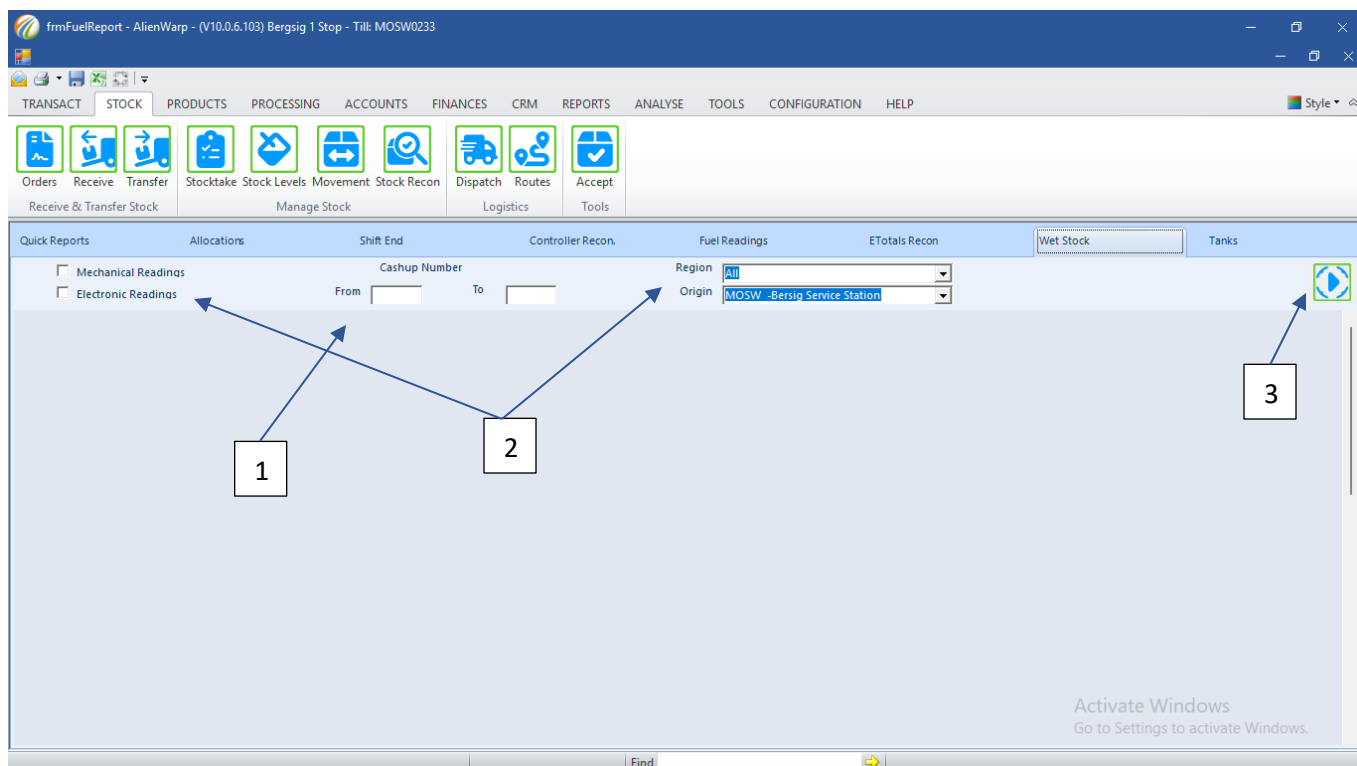
## 6. eTotal Recon.

- 16.) For eTotals recon reports select the from and to date range and times.
- 17.) Select the location you want to populate the report for.
- 18.) Click the run button to populate the report.



## 7. Wet Stock

- 19.) For Wet Stock reports enter the from and to cash up numbers.
- 20.) Select the criteria, region and origin.
- 21.) Click the run button to populate the report.



## 9. Tanks

- 22.) For tanks reports select the from and to date range and times.
- 23.) Select the tanks, groups and locations.
- 24.) Click the run button to populate the report.

